



3D

SERIES

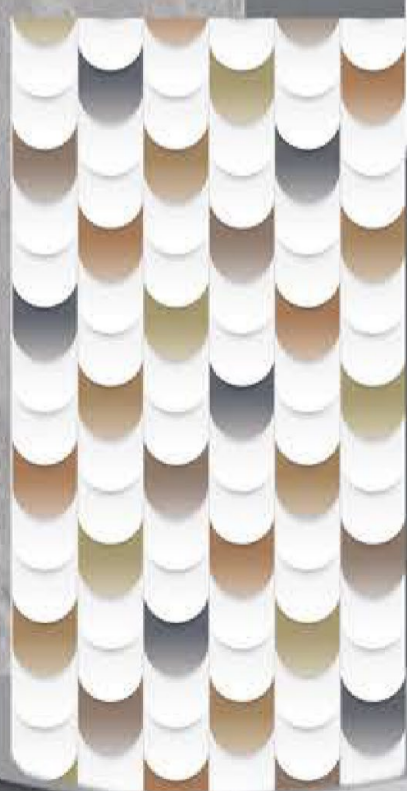


PGVT

GVT

600x1200 mm

Glossy





Size :  
600 x 1200

Finish :  
GLOSSY

**EM 3D\_001**

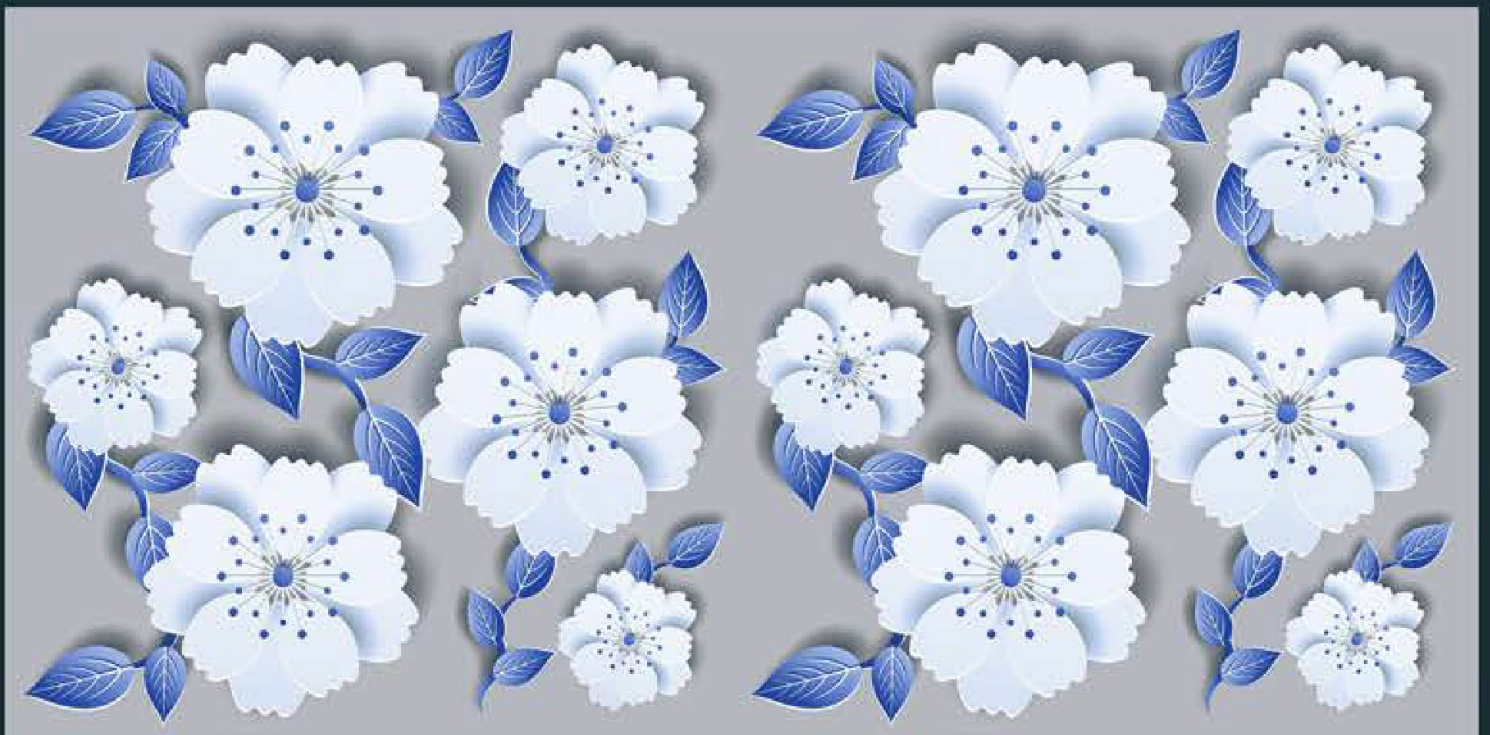




Size :  
600 x 1200

Finish :  
GLOSSY

**EM 3D\_002**





Size :  
600 x 1200

Finish :  
GLOSSY

EM 3D\_003





Size :  
600 x 1200

Finish :  
GLOSSY

**EM 3D\_004**





Size :  
600 x 1200

Finish :  
GLOSSY

**EM 3D\_005**





Size :  
600 x 1200

Finish :  
GLOSSY

EM 3D\_007



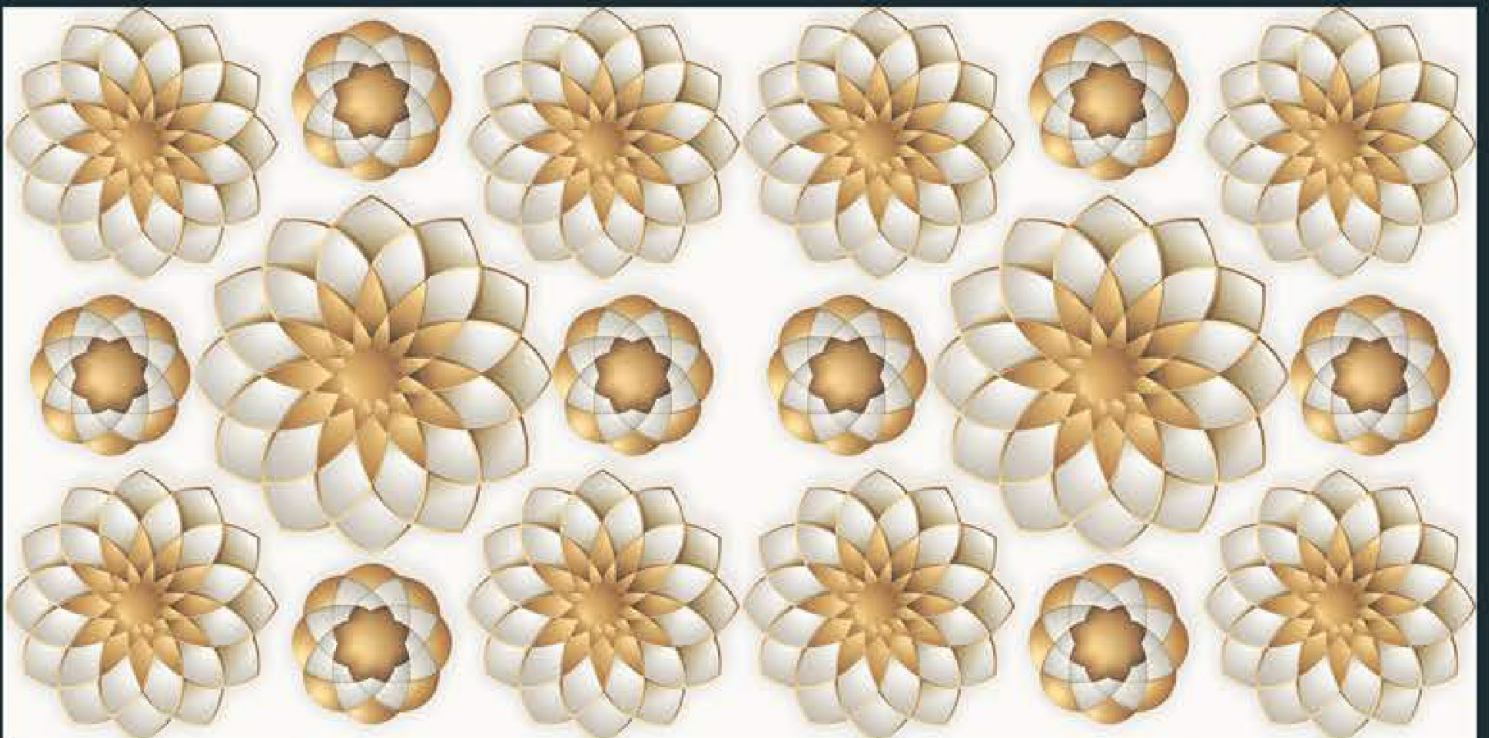


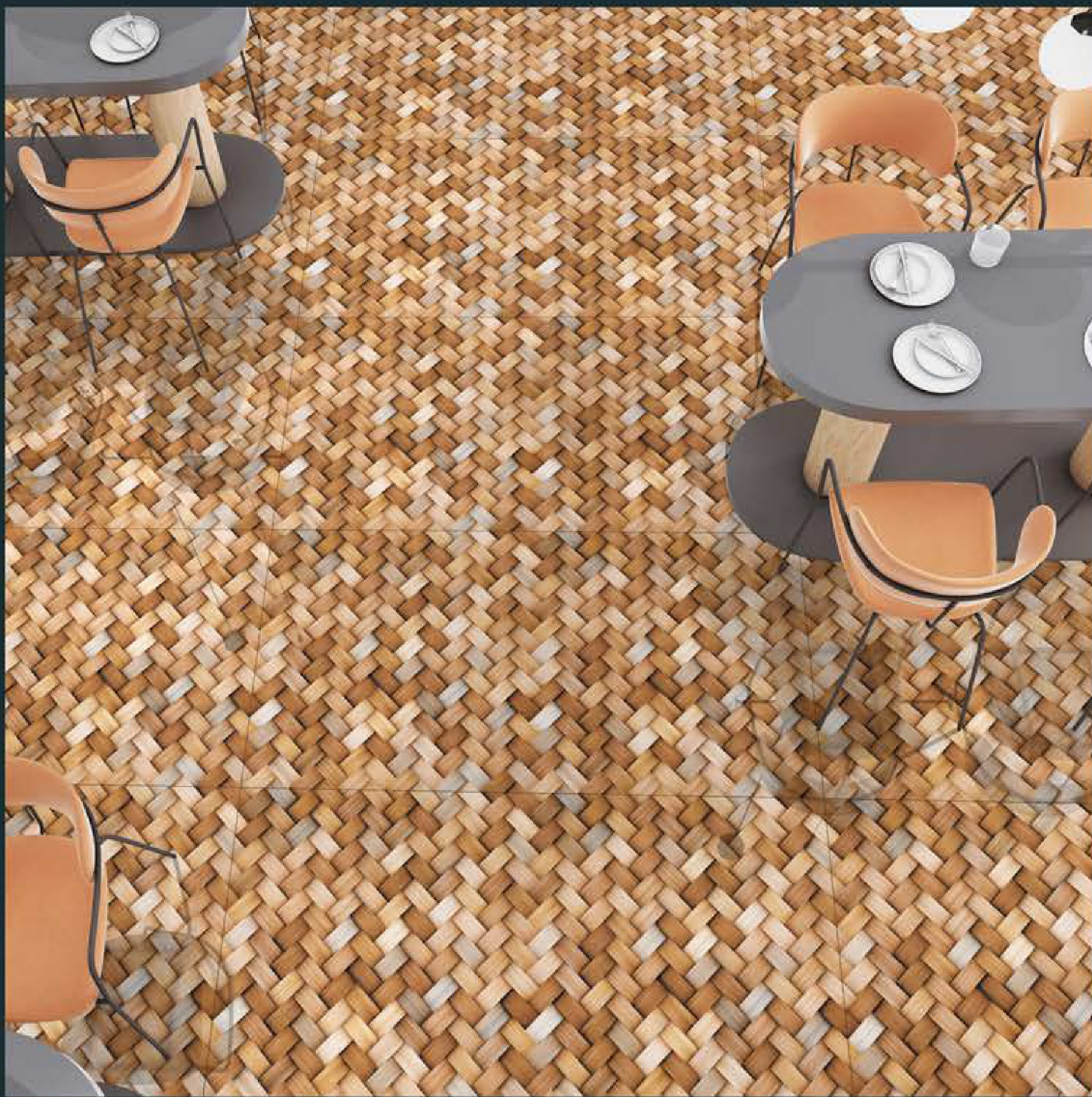


Size :  
600 x 1200

Finish :  
GLOSSY

EM 3D\_0012

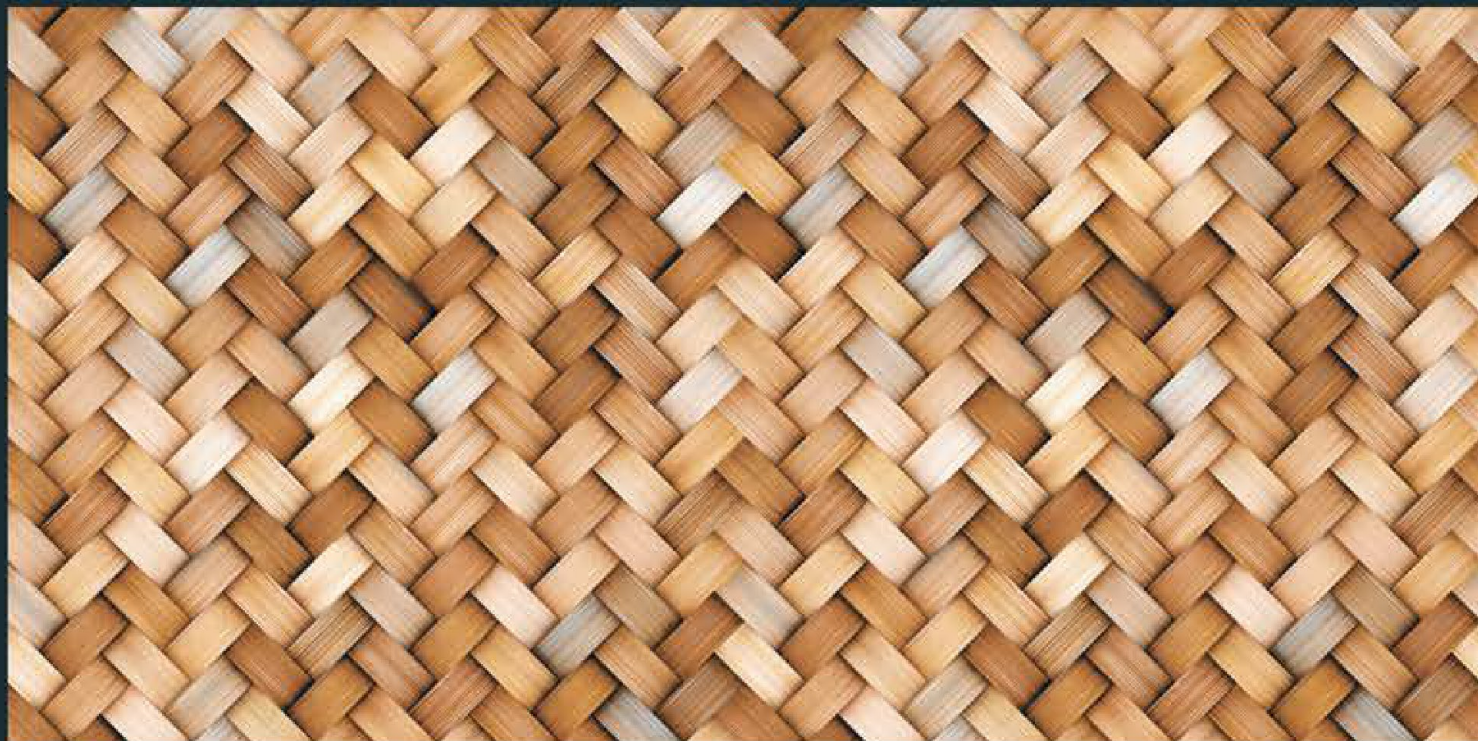




Size :  
600 x 1200

Finish :  
GLOSSY

**EM 3D\_0013**

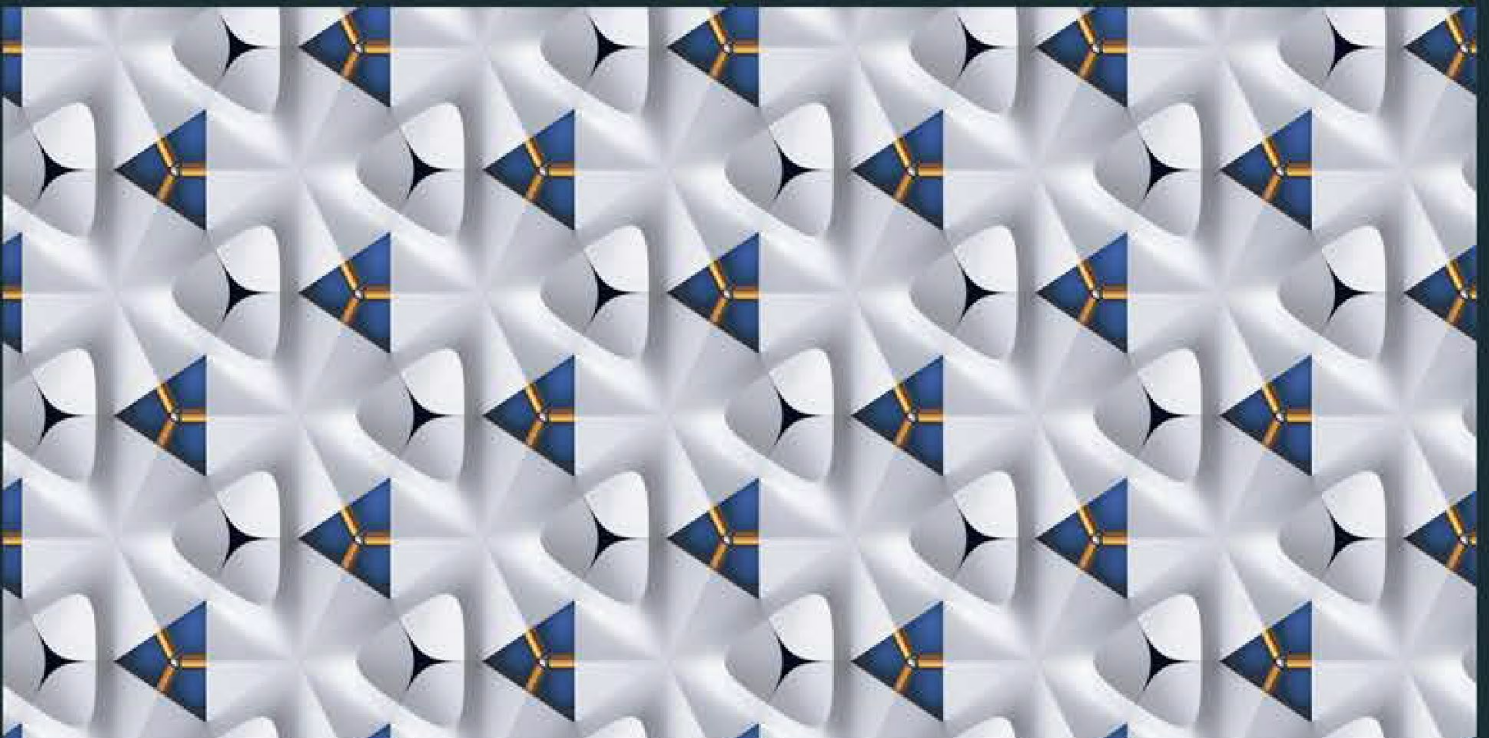




Size :  
600 x 1200

Finish :  
GLOSSY

**EM 3D\_0014**





Size :  
600 x 1200

Finish :  
GLOSSY

**EM 3D\_0015**

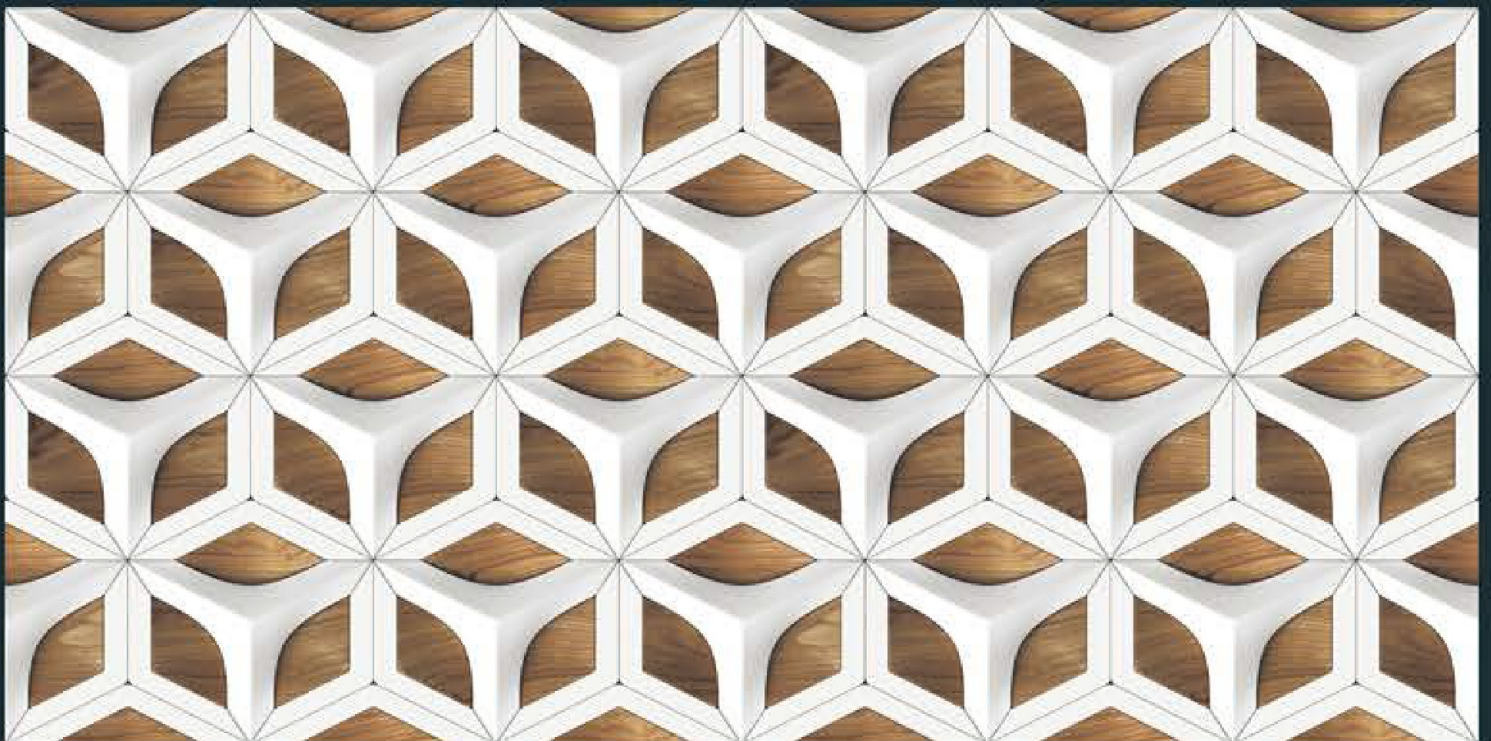




Size :  
600 x 1200

Finish :  
GLOSSY

EM 3D\_0017

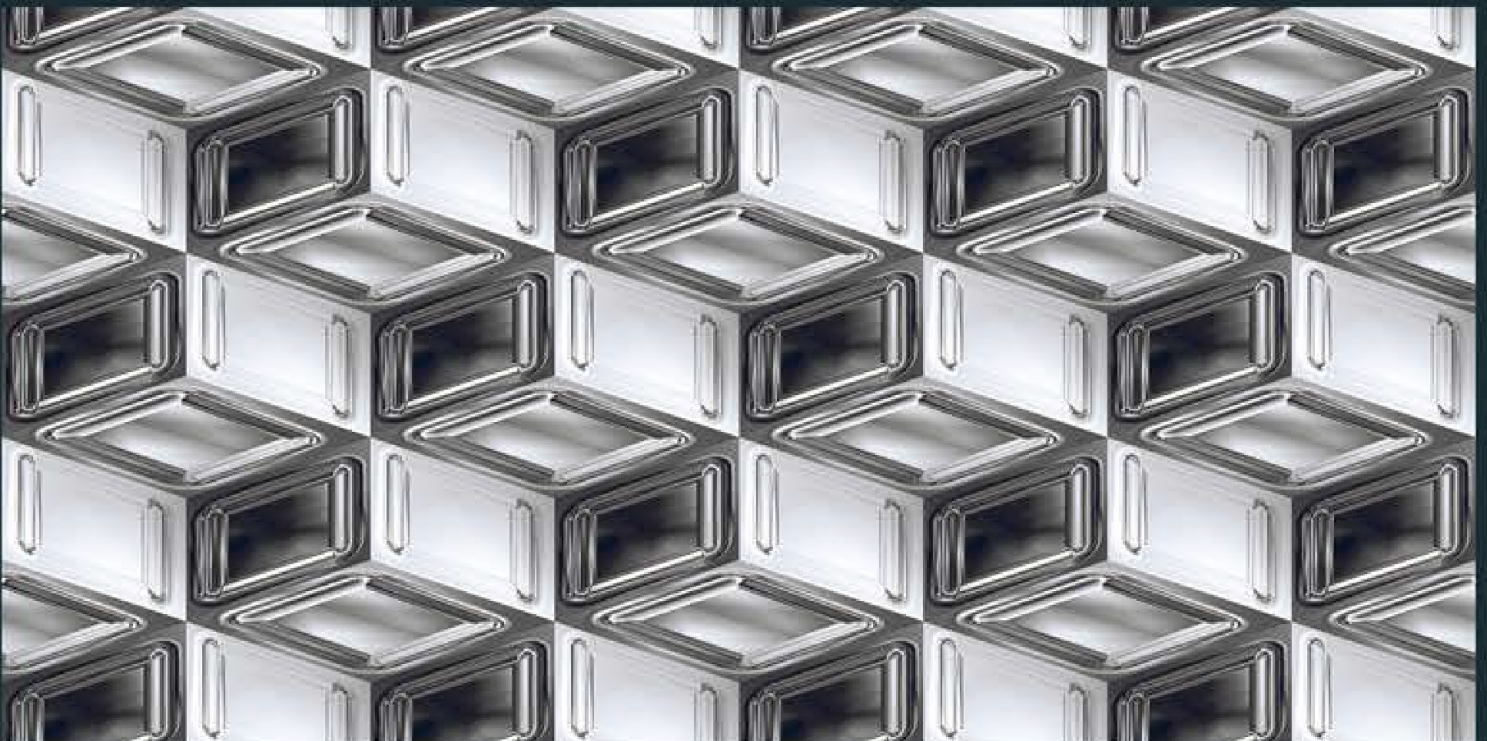




Size :  
600 x 1200

Finish :  
GLOSSY

**EM 3D\_0020**





Size :  
600 x 1200

Finish :  
GLOSSY

**EM 3D\_0022**





Size :  
600 x 1200

Finish :  
GLOSSY

**EM 3D\_0023**



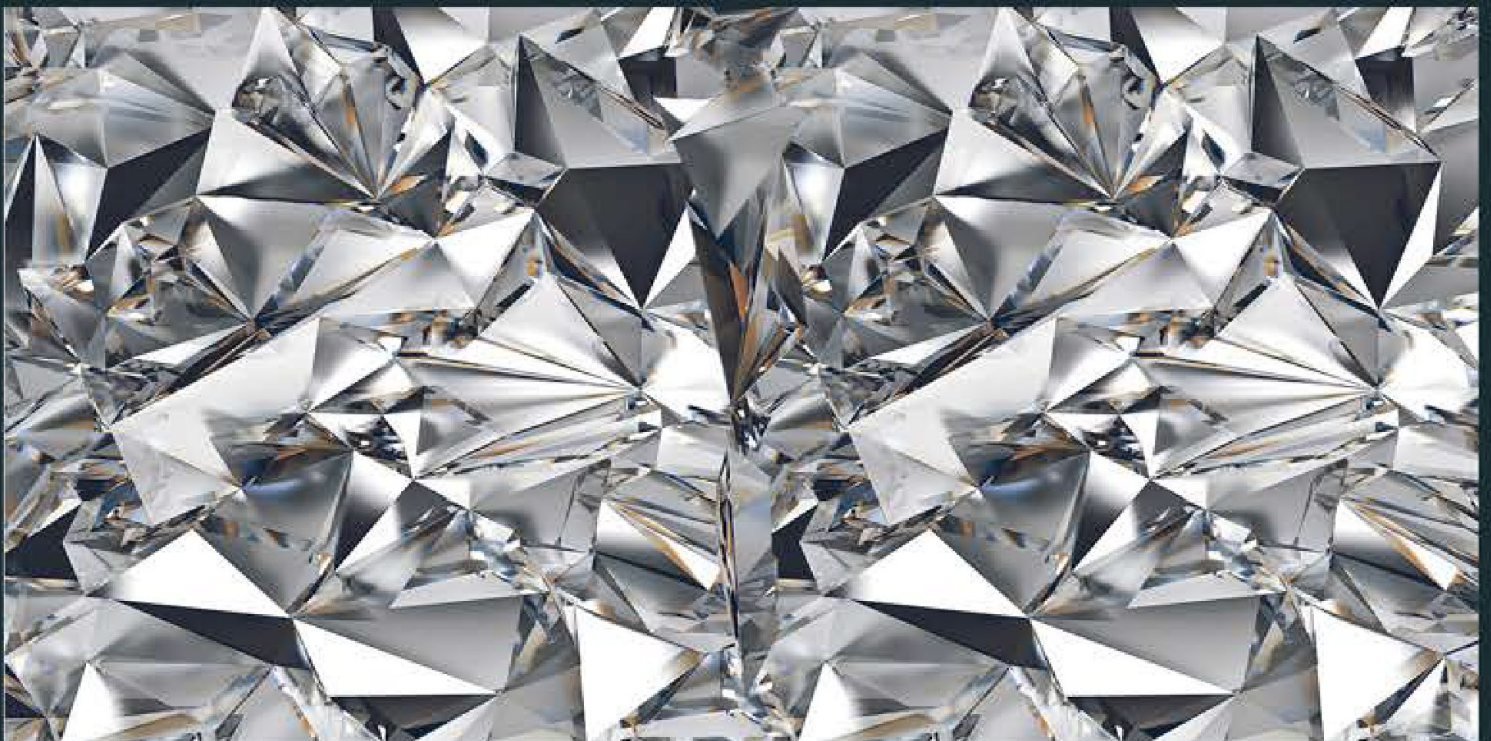




Size :  
600 x 1200

Finish :  
GLOSSY

**EM 3D\_0025**





Size :  
600 x 1200

Finish :  
GLOSSY

**EM 3D\_0026**





Size :  
600 x 1200

Finish :  
GLOSSY

EM 3D\_0027

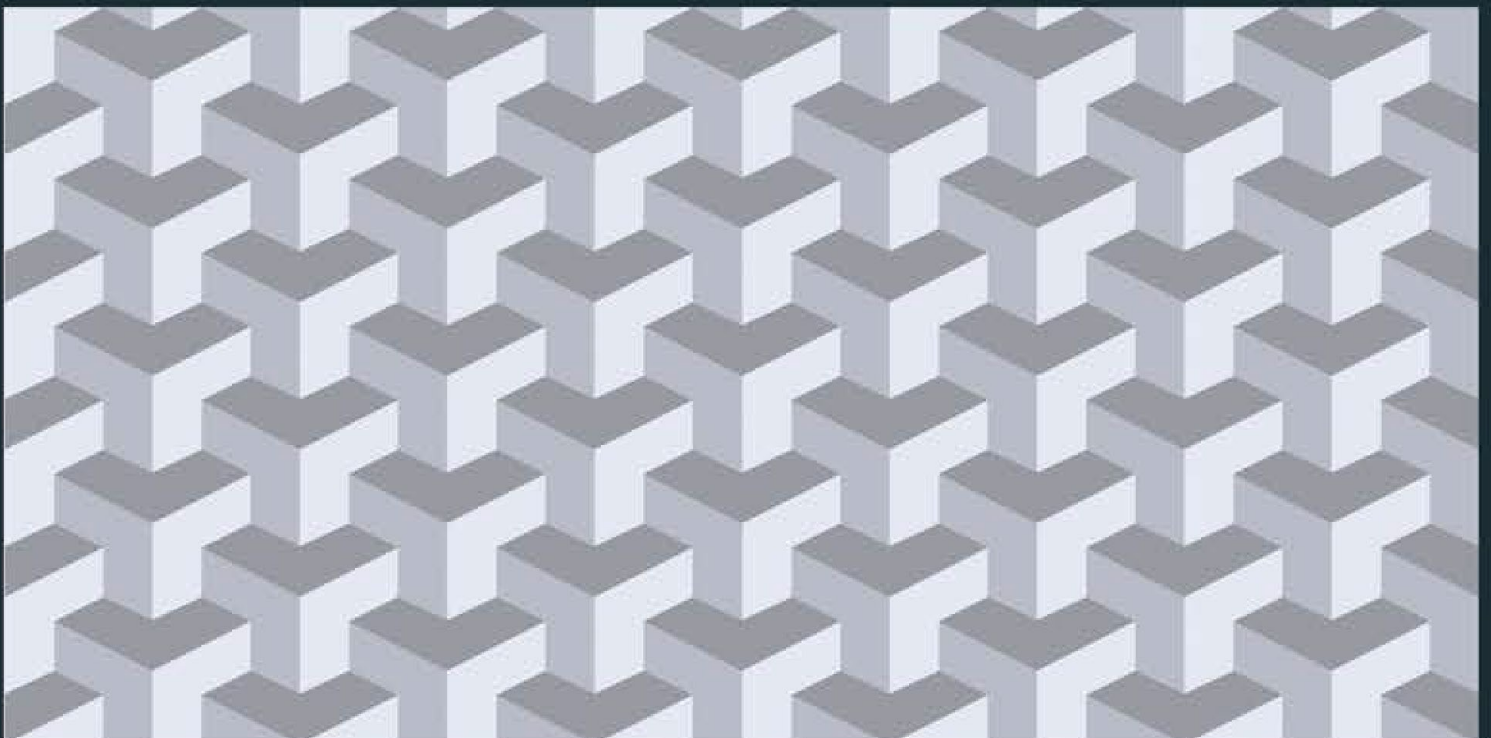




Size :  
600 x 1200

Finish :  
GLOSSY

**EM 3D\_0028**





Size :  
600 x 1200

Finish :  
GLOSSY

**EM 3D\_0029**





Size :  
600 x 1200

Finish :  
GLOSSY

**EM 3D\_0034**

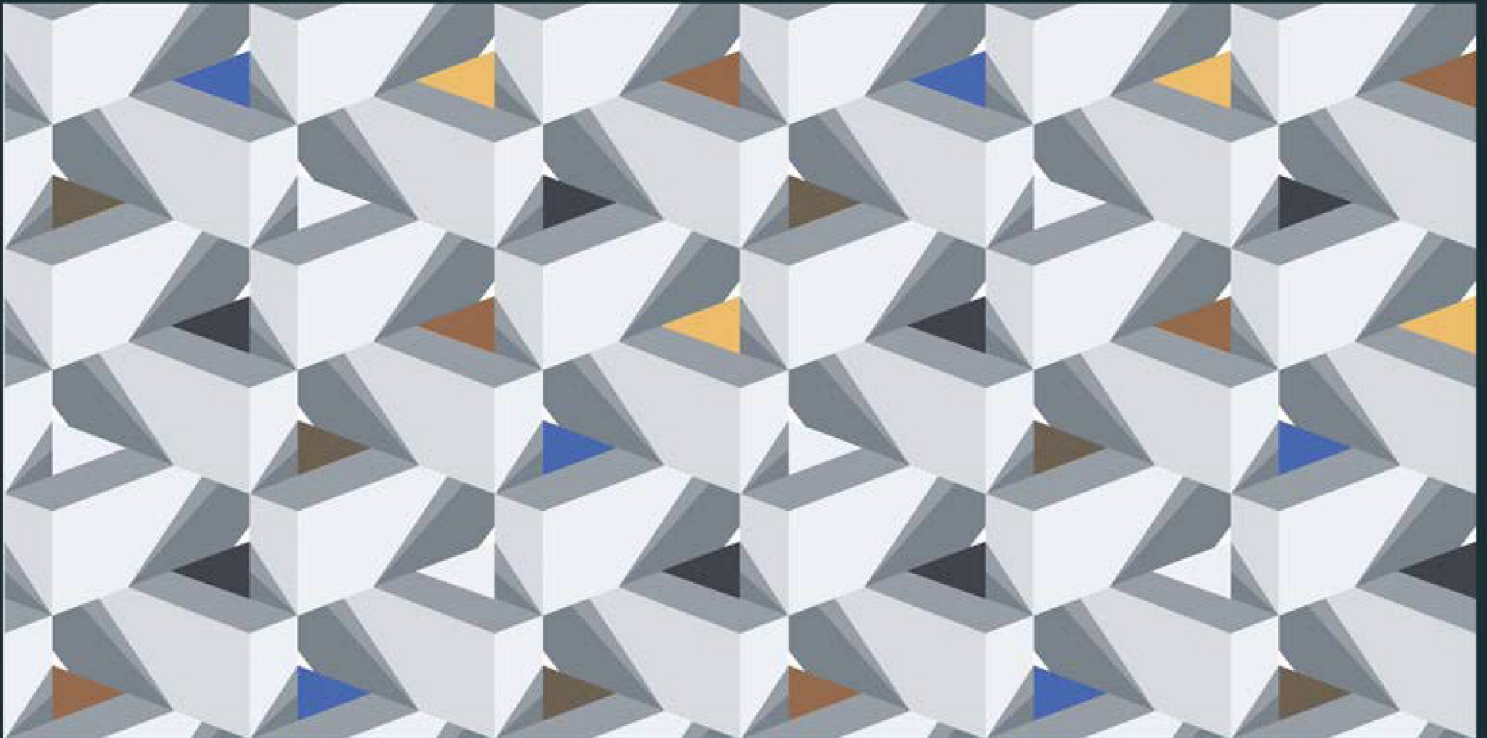




Size :  
600 x 1200

Finish :  
GLOSSY

**EM 3D\_0036**





Size :  
600 x 1200

Finish :  
GLOSSY

**EM 3D\_0037**







Size :  
600 x 1200

Finish :  
GLOSSY

**EM 3D\_0038**





Size :  
600 x 1200

Finish :  
GLOSSY

**EM 3D\_0039**

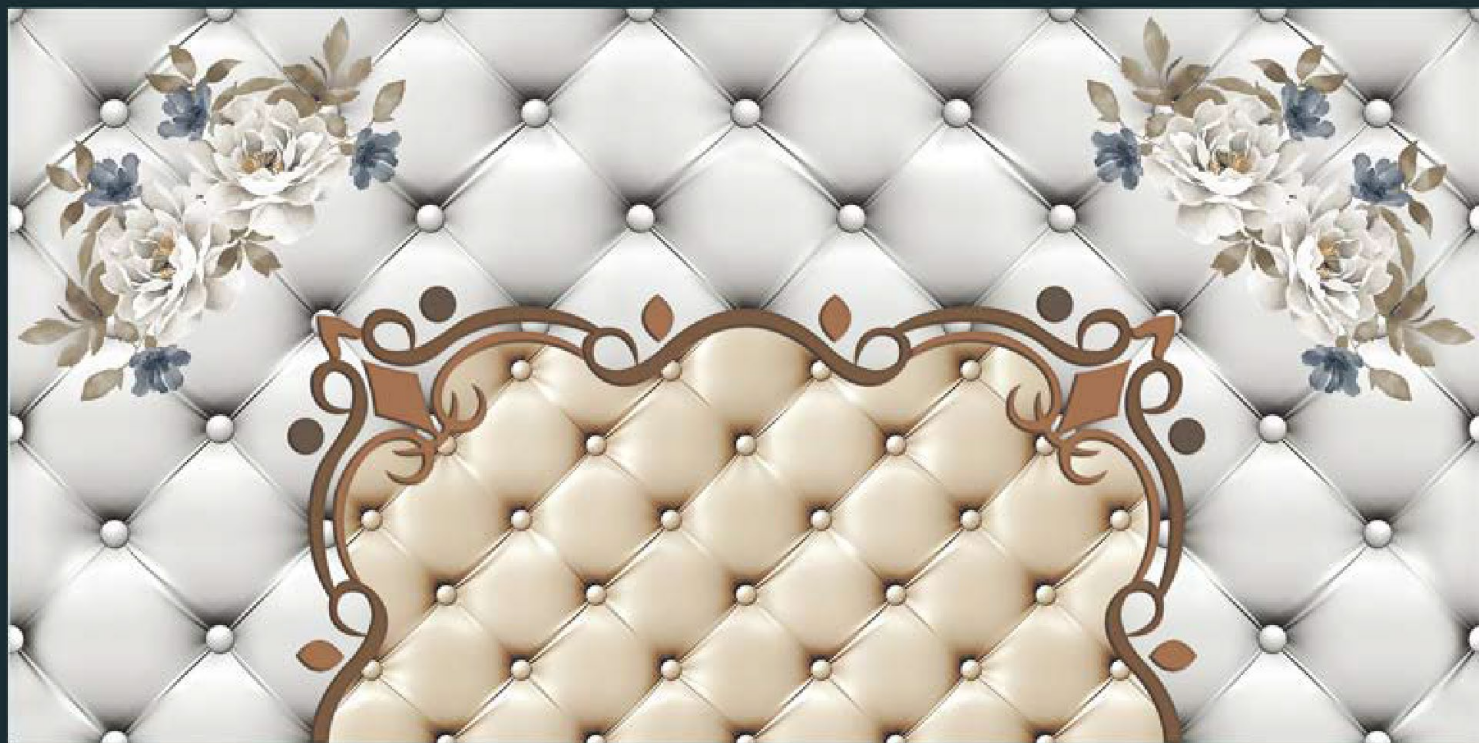




Size :  
600 x 1200

Finish :  
GLOSSY

**EM 3D\_0040**

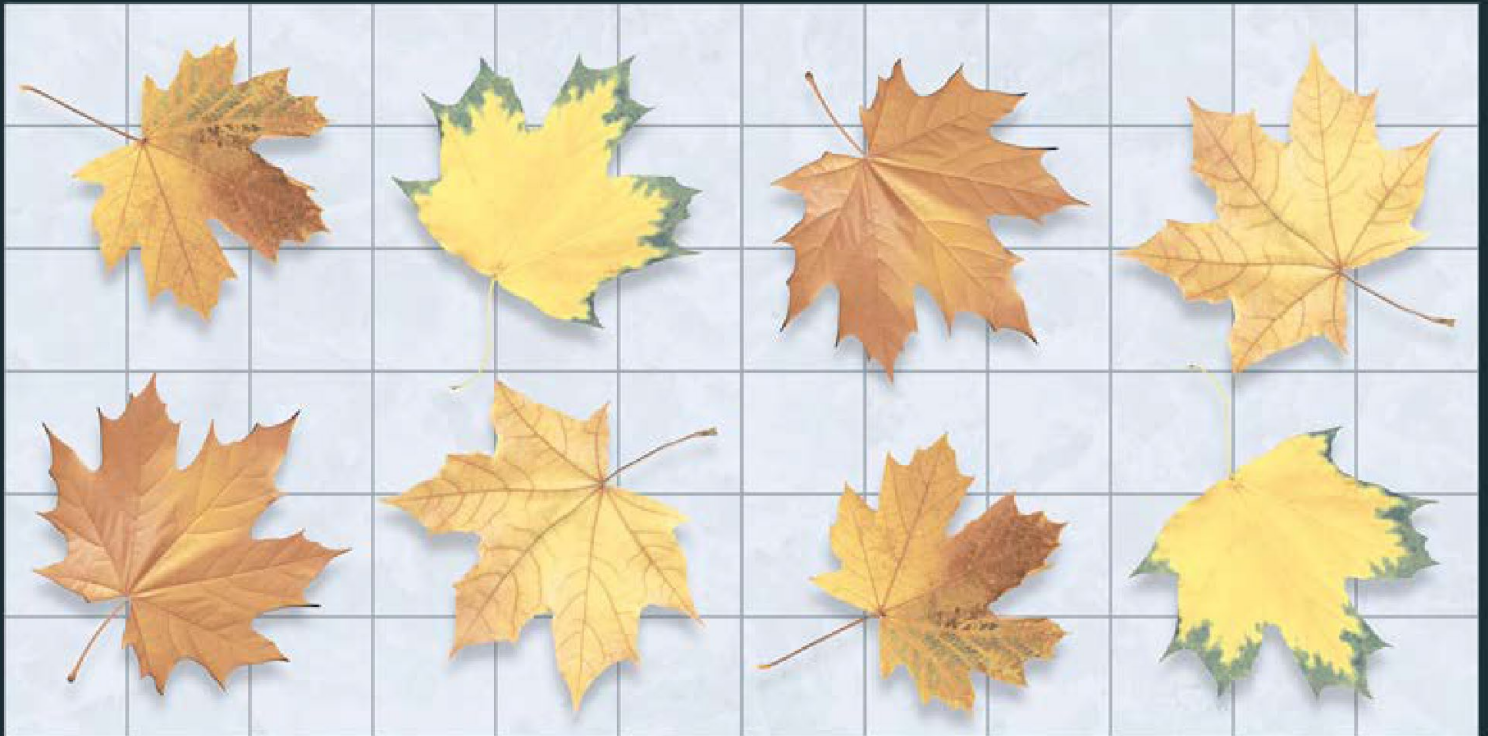




Size :  
600 x 1200

Finish :  
GLOSSY

**EM 3D\_0041**

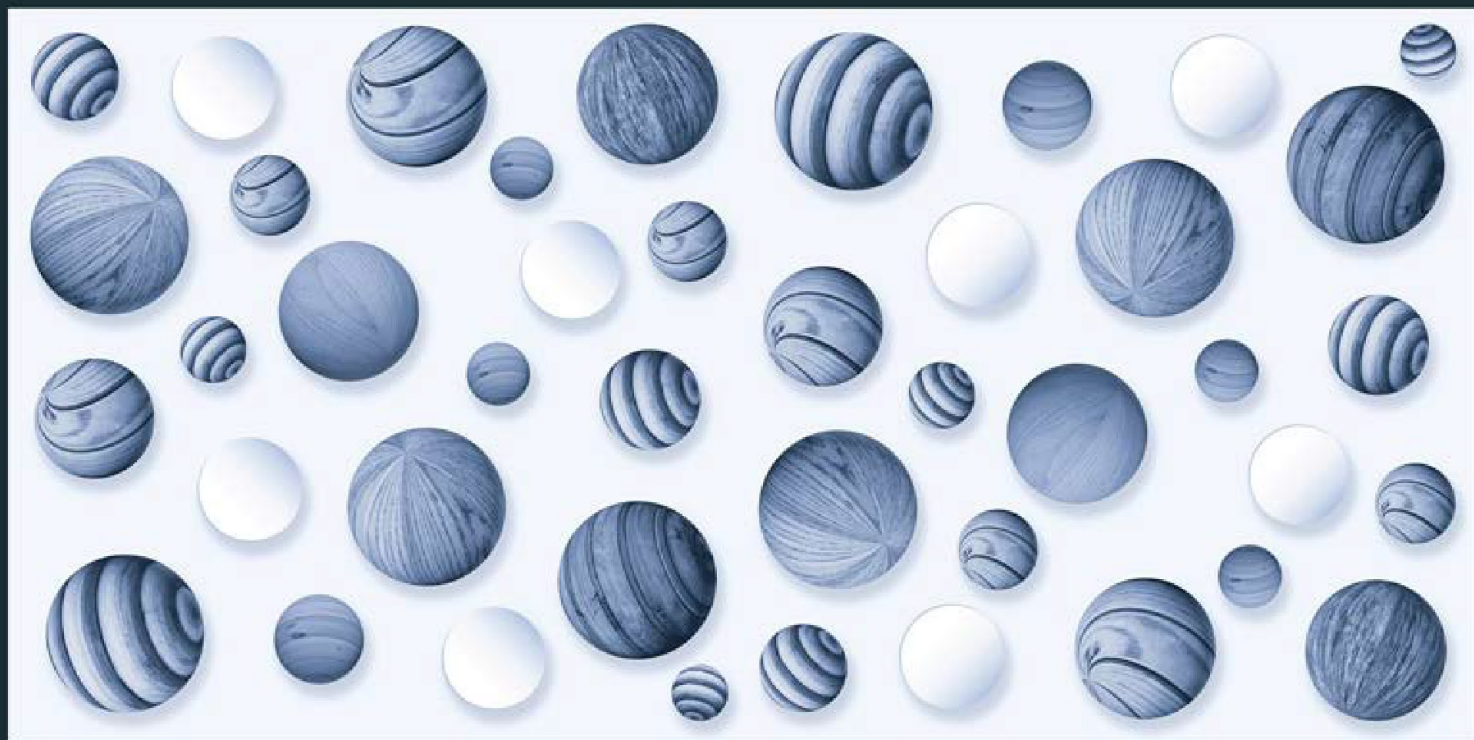




Size :  
600 x 1200

Finish :  
GLOSSY

**EM 3D\_0042**



# TECHNICAL SPECIFICATION

| CHARACTERISTIC | STANDARD AS PER ISO-13006/EN 14411 GROUP Bla | MEAN VALUE OF POLISHED GVT | MEAN VALUE OF RUSTIC GVT | TEST METHOD |
|----------------|--|----------------------------|--------------------------|-------------|
|----------------|--|----------------------------|--------------------------|-------------|

## REGULATORY PROPERTIES

|                             |            |           |           |              |
|-----------------------------|------------|-----------|-----------|--------------|
| Deviation in length & width | ±0.5 %     | ±0.1 %    | ±0.1 %    | ISO-10545-2  |
| Deviation in thickness      | ±5.0 %     | ±4.0 %    | ±4.0 %    | ISO-10545-2  |
| Straightness in side        | ±0.5 %     | ±0.1 %    | ±0.1 %    | ISO-10545-2  |
| Rectangularity              | ±0.5 %     | ±0.1 %    | ±0.1 %    | ISO-10545-2  |
| Surface flatness            | ±0.5 %     | ±0.2 %    | ±0.2 %    | ISO-10545-2  |
| Color difference            | Unaltered  | No change | No change | ISO-10545-16 |
| Glossiness                  | As per mfg | Min 90%   | Min 4%    | GLOSSOMETER  |

## STRUCTURAL PROPERTIES

|                  |            |            |            |             |
|------------------|------------|------------|------------|-------------|
| Water absorption | < 0.50 %   | <0.05%     | <0.05%     | ISO-10545-3 |
| Apparent density | > 2.0 g/cc | >2.10 g/cc | >2.10 g/cc | DIN 51082   |

## MASSIVE MECHANICAL PROPERTIES

|                    |                           |                           |                           |             |
|--------------------|---------------------------|---------------------------|---------------------------|-------------|
| Modulus of rupture | Min. 35 N/mm <sup>2</sup> | Min. 40 N/mm <sup>2</sup> | Min. 40 N/mm <sup>2</sup> | ISO-10545-4 |
| Breaking strength  | Min. 1300 N               | Min. 2000 N               | Min. 2000 N               | ISO-10545-4 |
| Impact resistance  | As per mfg.               | Min. 0.55                 | Min. 0.55                 | ISO-10545-5 |

## SURFACE MECHANICAL PROPERTIES

|                             |             |              |              |             |
|-----------------------------|-------------|--------------|--------------|-------------|
| Surface abrasion resistance | As per mfg. | Min. Class-3 | Min. Class-4 | ISO-10545-7 |
| MOH's hardness              | As per mfg. | Min. 4       | Min. 5       | EN 101      |

## THERMO HYGROMETRIC PROPERTIES

|                          |                             |                           |                             |              |
|--------------------------|-----------------------------|---------------------------|-----------------------------|--------------|
| Frost resistance         | No damage                   | No damage                 | No damage                   | ISO-10545-12 |
| Thermal shock resistance | No damage                   | No damage                 | No damage                   | ISO-10545-9  |
| Moisture expansion       | Nil                         | Nil                       | Nil                         | ISO-10545-10 |
| Thermal expansion (COE)  | Max. 9.0 x 10 <sup>-6</sup> | Max. 6.5x10 <sup>-6</sup> | Max. 6.5 x 10 <sup>-6</sup> | ISO-10545-8  |
| Crazing resistance       | As per mfg.                 | Min. 10 Cycle             | Min. 10 Cycle               | ISO-10545-11 |

## CHEMICAL PROPERTIES

|                     |           |           |           |              |
|---------------------|-----------|-----------|-----------|--------------|
| Chemical resistance | No damage | No damage | No damage | ISO-10545-13 |
| Stain resistance    | Resistant | Resistant | Resistant | ISO-10545-14 |

## SAFETY PROPERTIES

|  |             |                        |                        |              |
|--|-------------|------------------------|------------------------|--------------|
| Slip resistance                          | As per mfg. | >0.40                  | >0.40                  | ISO-10545-17 |
| Fire resistance                          | As per mfg. | Fire proof             | Fire proof             | N. A.        |
| Lead & Cadmium given off by glazed tiles | As per mfg. | Does not yield Pb & Cd | Does not yield Pb & Cd | ISO-10545-15 |

## PACKING DETAILS

| SR. NO | PRODUCT         | NOMINAL SIZE | THICKNESS | TILES PER BOX | COVERAGE AREA |
|--------|-----------------|--------------|-----------|---------------|---------------|
| 1      | VITRIFIED TILES | 600x1200mm   | 8.50 mm   | 2             | 1.44 Sq. Mtr. |

